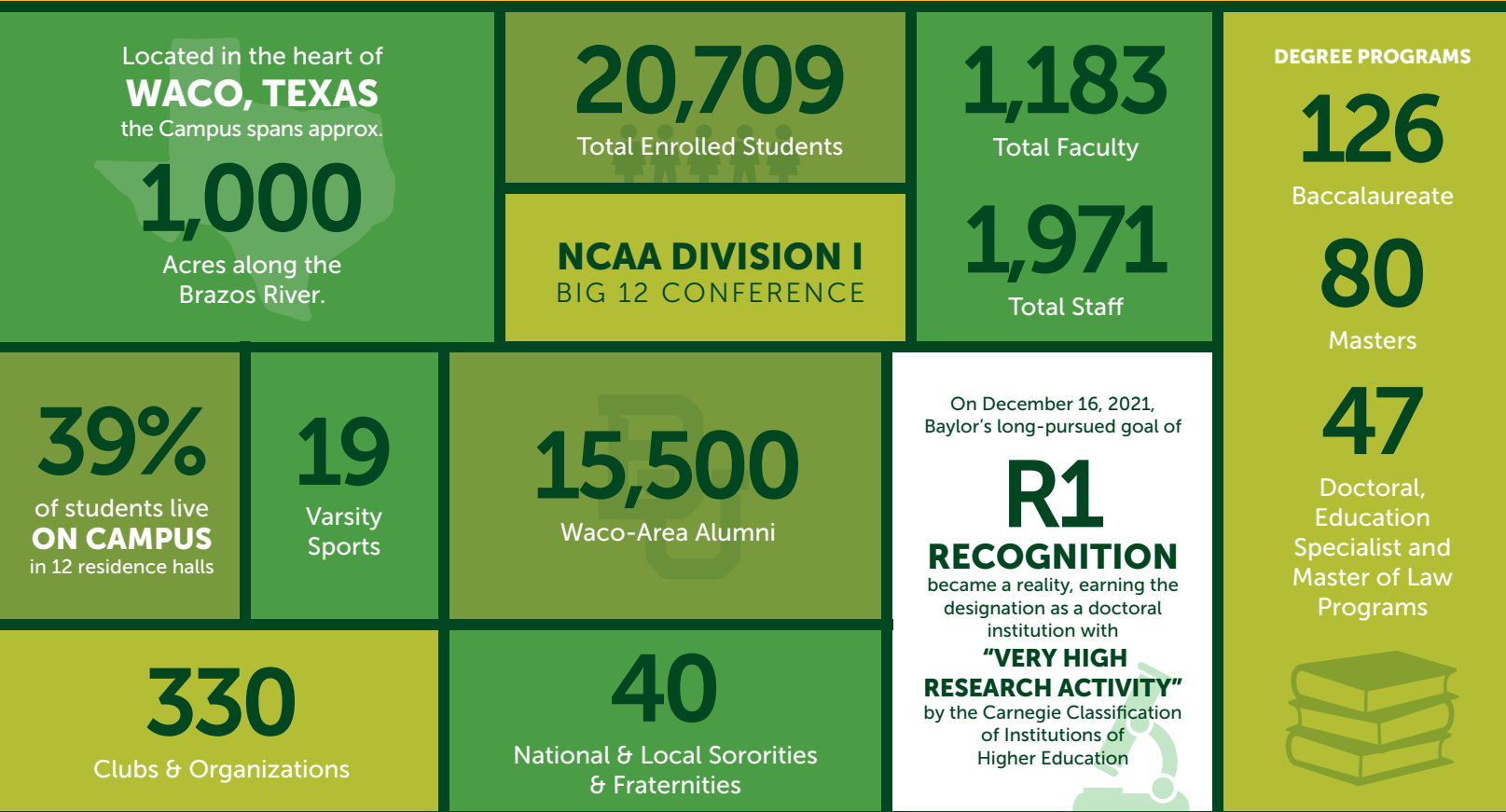


Quick Facts

*DATA FROM FALL 2022

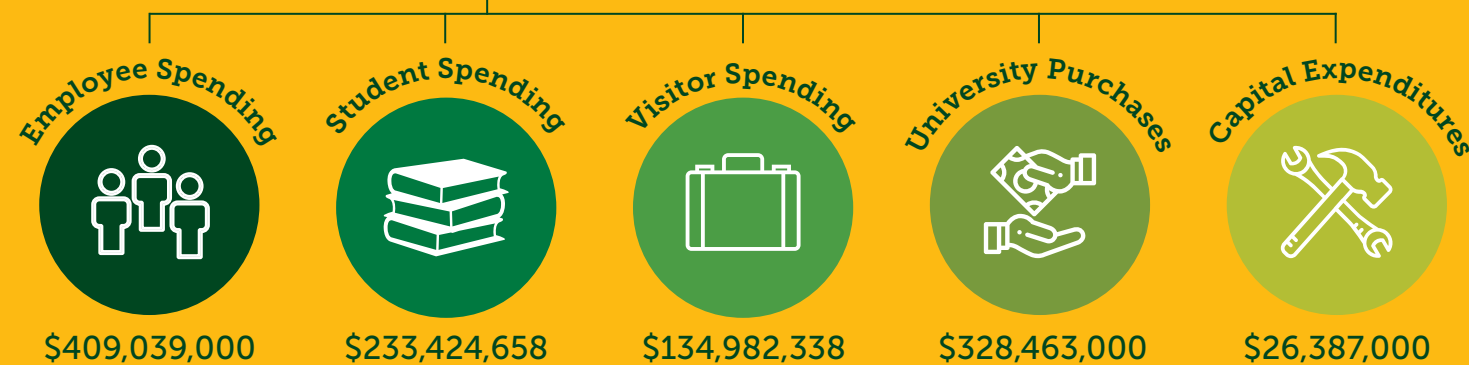


Total Economic Impact

\$2,011,750,296

Direct Spending
\$1,132,295,996

Induced Spending
\$879,454,300



About Baylor University

Baylor University is a private Christian university and a nationally ranked Research 1 institution located in Waco, Texas. Chartered in 1845 by the Republic of Texas through the efforts of Baptist pioneers, Baylor is the oldest continually operating university in Texas.

Baylor provides a vibrant campus community for more than 20,000 students by blending interdisciplinary research with an international reputation for educational excellence and a faculty commitment to teaching and scholarship.

Mission

The mission of Baylor University is to educate men and women for worldwide leadership and service by integrating academic excellence and Christian commitment within a caring community.

Vision

Guided by a bold vision, Pro Futuris, Baylor University is on a course towards preeminence as a Christian research university. Illuminate, the University's strategic plan, outlines details to that end as the University builds on historic strengths and strategically invests in new areas of research and service.



Baylor University

baylor.edu

2022-23

Social and Economic Impact Report



| Baylor University

Introduction

Annually, the Baylor Social and Economic Impact report highlights and shares data related to the partnerships and collaboration that exists between Baylor University, the City of Waco and countless organizations throughout the city the University calls home.

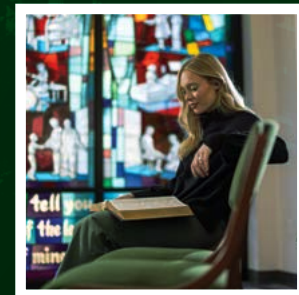
Each year, faculty, staff and students make a difference throughout the city through academics, service and more. Utilize the report to view key takeaways and discover highlights related to this important work.

Our Baylor, Our Waco

PHILANTHROPY AND PUBLIC GOOD

During the 2022-2023 year, Baylor University's Philanthropy and Public Good course gave grants to community organizations in the Waco community. This course is designed to provide an understanding of the role of philanthropy in shaping public life and investigate the power of charitable giving in contemporary social institutions. Funds are granted by students working together.

In the fall, Heart of Texas Goodwill, Greater Waco Sports Commission and Imagination Library each received \$5,000. Waco Habitat for Humanity received \$7,000 and Jesus Said Love received \$8,000. Prosper Waco received \$10,000. In the spring semester, Community Doulas of Waco received \$17,500. La Puerta received \$30,000. Grassroots Community Development, \$4,000, Greater Waco Legal Services, \$10,000, Talitha Koum, \$10,000, The Cove, \$12,000.



Visitors on Campus

ARMSTRONG BROWNING LIBRARY <i>The world's largest collection of Browning material and other fine collections of rare 19th-century books and works of art.</i>		UNIVERSITY ADMISSIONS <i>Recruiting Future Bears</i>	
29,231 Total Visitors	5 Visiting Scholars	11,093 Virtual Event Attendance	
50 Guided Tours for over 550 people	45 Public Events (lectures/concerts)	6,333 In-Person Event Attendance	
MAYBORN MUSEUM & GOV. BILL AND VERA DANIEL HISTORIC VILLAGE <i>Baylor University's natural science and cultural history museum.</i>		28,843 Campus Visits/Tour Attendance	
175,108 Total visitors served, including children, parents, caregivers and educators in 2022-2023	186 Schools impacted in 78 districts in Texas, reaching 16,366 school children throughout the year		

Community Service by the Numbers

150,000+ Baylor Community Service Hours	3,694 Total Hours Volunteered		97% of Student-Athletes served the community
	441 Total Volunteers	416 Student-Athletes completed at least 4 hours	
	42 Organizations Impacted	216 Community Events participated in	
			ATHLETIC COMMUNITY SERVICE

Research

\$82 billion spent on research	61 Patents filed
	37 Patents issued

Cultural Enrichment

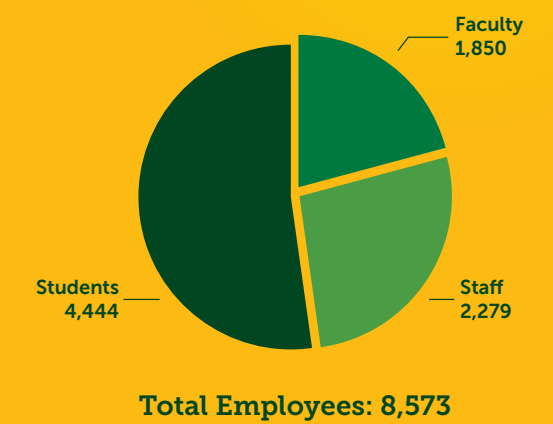
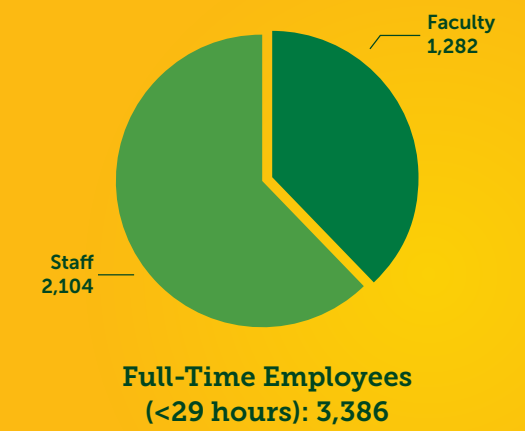
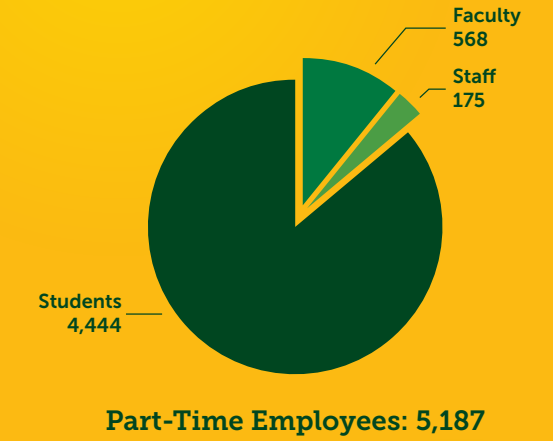
MUSIC

- 400+** free performances each year, including both in-person and live streamed opportunities
- 5,000** tickets provided for live performances
- 1,000+** summer Music Camp attendees
- 800+** attendees attend Men's and Women's Day Out Choral Festivals for high school students
- 6,000** elementary students reached annually by the the Children's Symphonies presented by Baylor Symphony Orchestra
- 600+** public school students reached annually through teh Jazz Youth Concerts
- 400+** public school students reached annually through the Children's Opera presented by Baylor Opera Theater
- 350+** national and international attendees to the annual Alleluia Church Music Conference

THEATRE

- 8** shows this season
- 6,534** tickets sold
- 86** acting opportunities for students
- 32** design opportunities for students

Employment by the Numbers



\$356 Million
 Total Salary and Wages for Faculty/Staff